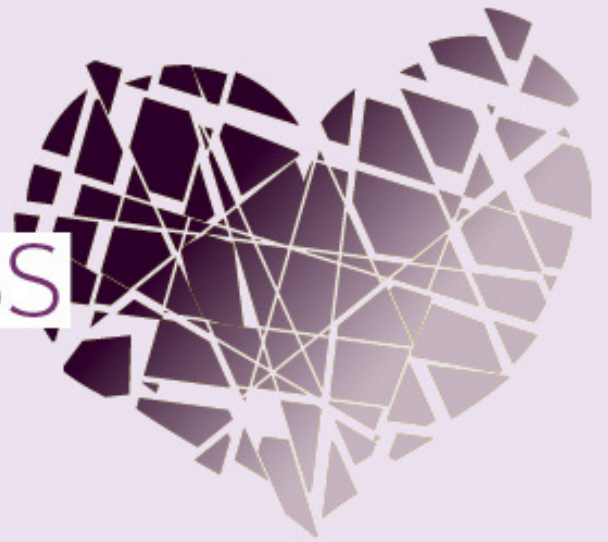


CHANA PRESENTS

VOICES:
FROM DARKNESS
TO LIGHT
October 25, 2022



VOICES: From Darkness to Light

CHANA's 4th annual fundraising and outreach event in recognition of Domestic Violence Awareness Month, VOICES: From Darkness to Light will feature Leslie Morgan Steiner, author of the New York Times bestselling memoir *Crazy Love*. Ms. Steiner will share her harrowing story as a victim of domestic violence and her personal journey from "darkness to light". A live question and answer session will follow her presentation. This event will be held in person and begin with a wine and cheese reception at the Marriott Owings Mills Metro Centre starting at 6:00 p.m..

Tickets to the event are \$100 and \$36 for guests under 30.

LEADERSHIP:

Penny Brown, VOICES, Co-Chair

Barbara Hyatt, VOICES, Co-Chair

Ellen Plant, CHANA, Development Chair

Linda G. Katz, CHANA, Board Chair

Lauren Shaivitz, CHANA, Executive Director

Lead Sponsor: Lou Hyman, CLU

In loving memory of Barbi Goldsmith Hyman

CHANA is an agency of The Associated



SPONSORSHIP OPPORTUNITIES

Titanium Sponsor

\$7,500 and above

- Premier logo placement on signage at the event
- Logo inclusion on all event invitations and e-communications prior to event
- Pre- and post-event branded social media posts
- Recognition on CHANA's event website
- 2 sponsorship tickets to the event
- A hardcover copy of *Crazy Love* by Leslie Morgan Steiner, CHANA's event speaker

Platinum Sponsor

\$5,000

- Logo placement on signage at the event
- Logo inclusion on all event invitations and e-communications prior to event
- Pre- and post-event branded social media posts
- Recognition on CHANA's event website
- 2 sponsorship tickets to the event
- A hardcover copy of *Crazy Love* by Leslie Morgan Steiner, CHANA's event speaker

Gold Sponsor

\$2,500

- Logo placement on signage at the event
- Logo inclusion on all event invitations and e-communications prior to event
- Pre- and post-event branded social media posts
- Recognition on CHANA's event website
- 2 sponsorship tickets to the event
- A copy of *Crazy Love* by Leslie Morgan Steiner, CHANA's event speaker

Silver Sponsor

1,000

- Mention in post-event social media post
- Recognition on CHANA's website
- 2 sponsorship tickets to the event
- A copy of *Crazy Love* by Leslie Morgan Steiner, CHANA's event speaker

Bronze Sponsor

\$500

- Recognition on CHANA's event website
- 2 sponsorship tickets to the event

VOICES: From Darkness to Light

Tuesday, October 25, 2022 | 6:00 p.m. | Marriott Owings Mills Metro Centre

As a VOICES Sponsor, you will support CHANA's free, crisis intervention services for victims and survivors of abuse throughout our community. At a time when calls for service have increased exponentially and victims are in greater danger, your contribution has never been more crucial.

Yes, please count me in as a sponsor!

- Titanium Sponsor.....\$7,500 and above
- Platinum Sponsor.....\$5,000
- Gold Sponsor.....\$2,500
- Silver Sponsor.....\$1,000
- Bronze Sponsor.....\$500

For sponsor recognition, please check an option below:

- Please use logo [Email as .jpeg or .png to dleder@associated.org by October 4, 2022]
- Please list my name [Write your name exactly as you wish it to appear on all materials.]

Name: _____

Company: _____

Address: _____

City: _____ State: _____ Zip: _____

Telephone: _____ Email: _____

Company Website: _____

Please make your contribution payable to CHANA and send to:

CHANA - VOICES
1325 Bedford Road
PO Box 15096
Pikesville, MD 21282

CHANA is an operating program of The Associated: Jewish Federation of Baltimore. CHANA's EIN#: 52-0607957.

For more information, please contact Dayna Leder at dleder@associated.org.

Thank you for your support.

CHANA: Supporting the Community

Throughout the COVID-19 pandemic, there has been a dramatic increase in domestic violence and elder abuse cases and victims are in greater danger than ever before. Calls to CHANA from victims of domestic violence have increased by 92% over the last year, and it is expected that incidents of elder abuse have risen by 83%. As the pandemic eventually recedes, we know that its devastating impact will gravely effect victims and survivors of abuse for years to come.

CHANA's domestic violence calls for service have increased by 92% over the last fiscal year.

CHANA's services have never been so critical. The pandemic has added many additional barriers for victims attempting to leave abusive relationships. Court closures at the beginning of the pandemic have now created a backlog of cases, leaving victims vulnerable and financially unstable as they await custody or child support hearings. The shift to working from home has isolated victims from social support systems and further jeopardized their safety. The ever-changing circumstances imposed by the pandemic have added a myriad of complexities to victims' journeys to safety and healing, resulting in CHANA's advocates spending 74% more time with each caller. With the growing call volume, the increase in danger, and the added complications, CHANA's services are more vital now than ever before.

Your support enables CHANA to provide immediate, crisis intervention services to each and every caller, including:

- Individual supportive counseling
- Safety planning
- Shelter
- Legal advocacy
- Support groups
- Consultation, guidance, and support to concerned community members and institutions

It is estimated that over the course of the pandemic, elder abuse cases have increased by 83% worldwide.

Your generosity ensures that all members of our community have access to CHANA's services.

Everyone deserves to feel safe.

CHANA advocates are spending 74% more time per call due to an increase in complexity and danger.